

2-in-1 Ultra Pallet Rackable & Stackable

出口及片面使用型塑膠棧板

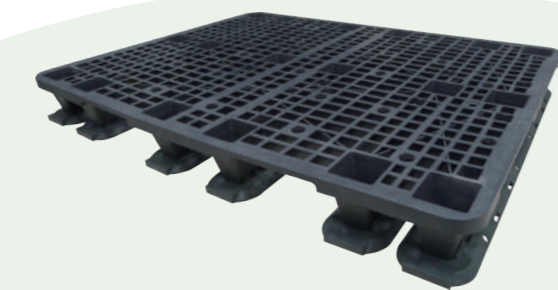
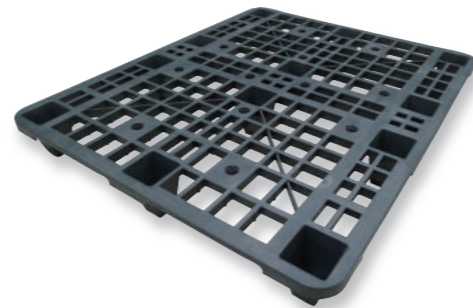
產品特性 Product Attribute



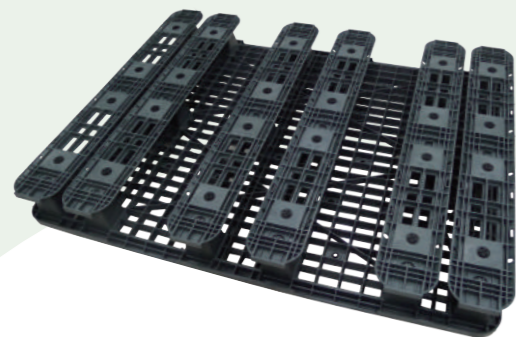
成型方式：射出加工成型
 材質：Plastics PP/PE
 適用範圍：出口用
 使用次數：單次及多次使用

- 使用100%回收原料，符合新一代環保標準之需要。
- 易清洗、無木屑白蟻、不須煙燻更環保，不易損傷貨物及操作人員。
- 棧板及底板皆可互相堆疊存放，節省倉租及運輸成本。
- 棧板底部經縝密設計更能平穩載重，接觸地面面積大，貨品放置時更穩固。
- 可拆式底板，增添便利性及實用性，自動倉儲、堆高機、拉板車、電動拖板車皆通用，並具止滑塞裝置，防滑又安全。
- 符合CNS及JIS標準中對塑膠棧板之功能測試要求。

↓ 120 x 100 x 13(cm)
含止滑塞



↑ 140 x 100 x 15(cm)
含底板及止滑塞

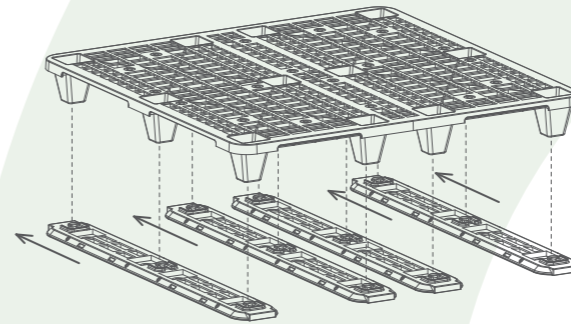


Technology : Injection moulded
Material : Plastics PP/PE
 (customized material upon client's request)
Applications : Export, logistics, transportation, warehouse storage
Reusability : One time or to be used multiple times

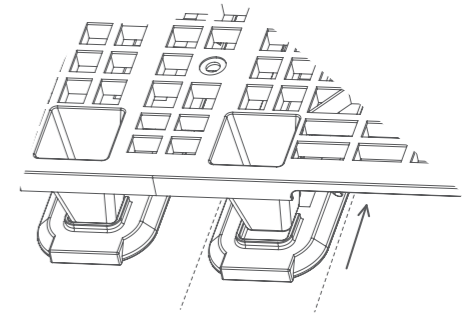
- 100% recyclable considered as an eco-friendly product.
- No nails, splinters and sharp edges, reduced workers injury and damage.
- Optional bottom removable plates creates excellent stacking which save storage and shipping costs.
- Designed bottom plate with anti-slip rubber allows larger contact surface to the floor which increase the load stability and safty.
- Comply to International CNS and JIS pallet Standards

組裝程序 Assembly Program

step 1 將底板與棧板底部對齊
 To align the bottom plate with and pallet top foot.



step 2 扣上底板即可完成
 To hook up the bottom plate.



↑ 120 x 120 x 15(cm)
含底板

全系列棧板可依不同需求選配加裝底板

100%可回收原料，可拆卸底板不僅組裝方便更能提升機動性，可配合自動倉儲、堆高機、拉板車及電動拖板車等使用。
 The advantage of this product is using 100% recyclable material and the removable bottom plate makes the assembly easier and increase the product usage mobility.
 Our product is suitable for automatic storage system, fork lifter, plate truck and power pallet staker.

產品規格 Product Specification



產品編號 Item No	尺寸規格(公分) Dimension(cm) ±1 (cm)			荷重(公斤) Loading Capacity(kg)		底板用量 Quantity Used (cm) x (pcs)	
	長 Length	寬 Width	高 Hight	動荷重 Dynamic	靜荷重 Static		
110 x 110	SFPL-1111	110	110	13	600	1000	
	SFPL-1111A	110	110	15	600	1000	110 x 4
120 x 100	SFPL-1210	120	100	13	600	1000	
	SFPL-1210A	120	100	15	600	1000	100 x 4
120 x 120	SFPL-1212	120	120	13	600	1000	
	SFPL-1212A	120	120	15	600	1000	120 x 4
140 x 110	SFPL-1411	140	110	13	600	1000	
	SFPL-1411A	140	110	15	600	1000	110 x 6

註 Remark
 1. 荷重數據以PP材質所製作棧板之測試數據為準 2. 以上數據皆僅供參考，依實際使用情況而有所不同，不提供任何商業證明使用
 1. Load value varies depending on the material used for the production of the pallet.
 2. Above testing value can differ from actual application condition. Not to be used for any commercial approval purposes.